

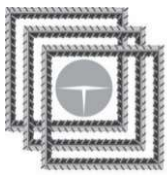
TRASTEEL ENGINEERING POLSKA Sp. Zo. o

Ewolucja Stali w Polsce



ISO 9001
BUREAU VERITAS
Certification





MAIN STEPS

In the heart of Poland's industrial sector, Trasteel Engineering Polska Sp. z o.o. was born from a vision of innovation and precision. The company quickly positioned itself as a leader in engineering solutions, specializing in high-performance steel structures and cutting-edge industrial technologies.

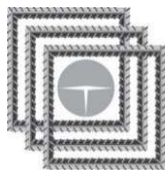
From its beginnings, the company grew rapidly, securing contracts with major European construction firms. Its expertise in manufacturing D-Walls and custom steel components made it a go-to partner for large-scale infrastructure projects.

The company's engineers, refined their processes, integrating state-of-the-art automation and sustainable practices into their operations. A defining moment came when Trasteel Engineering Polska was tasked with designing and fabricating a complex steel framework for the second metro line project in Warsaw. This success cemented their reputation as industry pioneers.

GEOGRAPHICAL PRESENCE



Today, Trasteel Engineering Polska Sp. z o.o. stands as a testament to the power of vision, dedication, and technical mastery. With a growing presence across Europe, the company continues to push the boundaries of engineering, shaping the future of industrial manufacturing—one project at a time.



Trasteel Engineering Polska

The company produces cut and bent steel structures and assembled structures for reinforced concrete walls and slabs, based on customer specifications.



Client's Industry



The main fabrication and construction companies acting in the field of large-scale infrastructure, civil and industrial engineering.

Steel Supply Chain

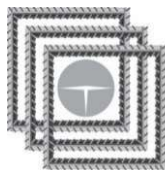


The Company's exclusive use of reinforcing steel bars produced in Europe (and therefore from certified supply chains) is a guarantee of reliability for the end user from both a quality and an environmental sustainability point of view.

Commitment to Excellence



Benefiting from the long experience in the specific industry by its shareholders, the Company today is a full service provider that works closely with its principals, optimizing processes and achieving efficient, safe and cost-effective realizations.



Trasteel Engineering Polska

Production capacity and Plant

Production Capacity and Certifications



Trasteel Engineering Polska has significant production capacity, with 3,000 tons per month of steel processed by cutting and bending and an additional 1,500 tons of assembled structures.

This production is focused on key structural elements for the construction industry, particularly for the fabrication of D-walls (diaphragms) and reinforcing cages for tunnels.

The Company is certified ISO 9001 and undergoes a yearly audit on the sustainability of its internal processes

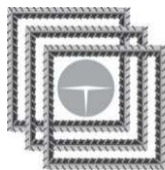
Production Plant



The Company operates in a 7000 sq. m. building.

It has positioned itself in Warsaw in order to have the opportunity to serve all of Poland and neighboring countries, and to be in contact with the major business realities of its target market



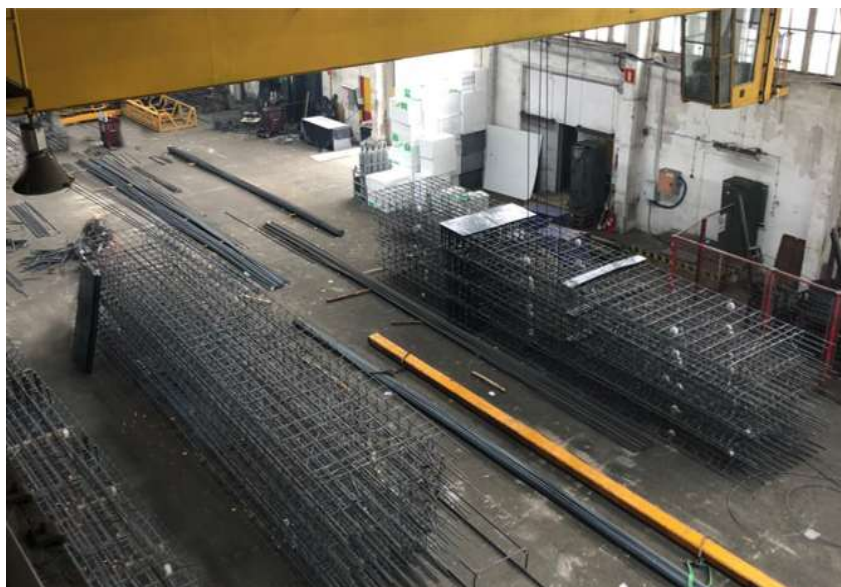
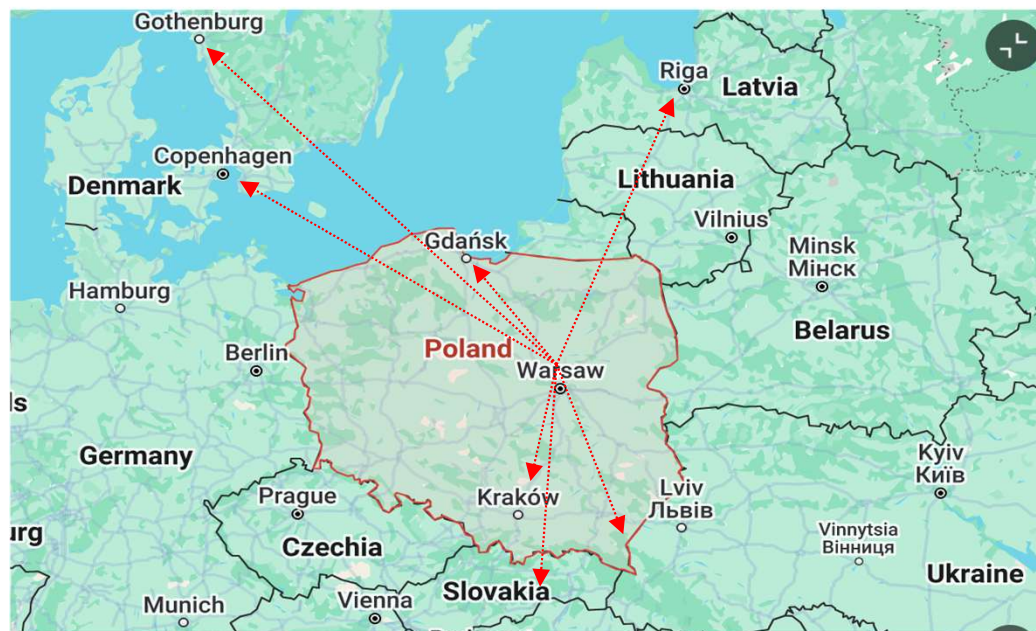


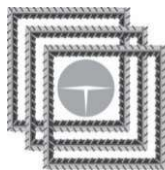
TRASTEEL ENGINEERING POLSKA Sp. z o.o.
Ewolucja Stali w Polsce

ISO 9001
BUREAU VERITAS
Certification



Factory in Warsaw - Poland





Trasteel Engineering Polska

budimex



INTOP



STRABAG

ADAMIETZ



SKANSKA



Stump & Franki



ITINERA Køge Hospital – DK

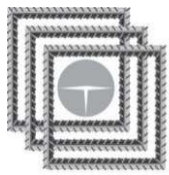


New Storstrøm
Bridge



BERERIX





TRASTEEL ENGINEERING POLSKA Sp. z o.o.
Ewolucja Stali w Polsce

ISO 9001

BUREAU VERITAS
Certification



BRONZE | Top 35%

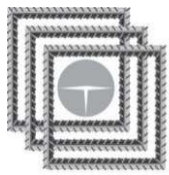
ecovadis

Sustainability Rating
JUN 2024

Business lines – Poland

Cut and Bend in full range and diameter

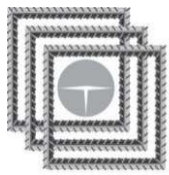




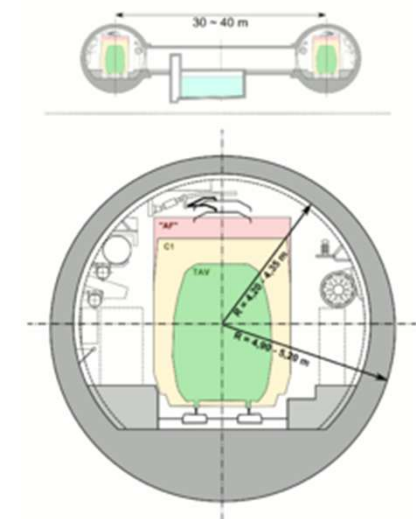
Business line developing plan

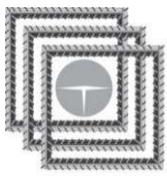
Assembled cages and D-Walls



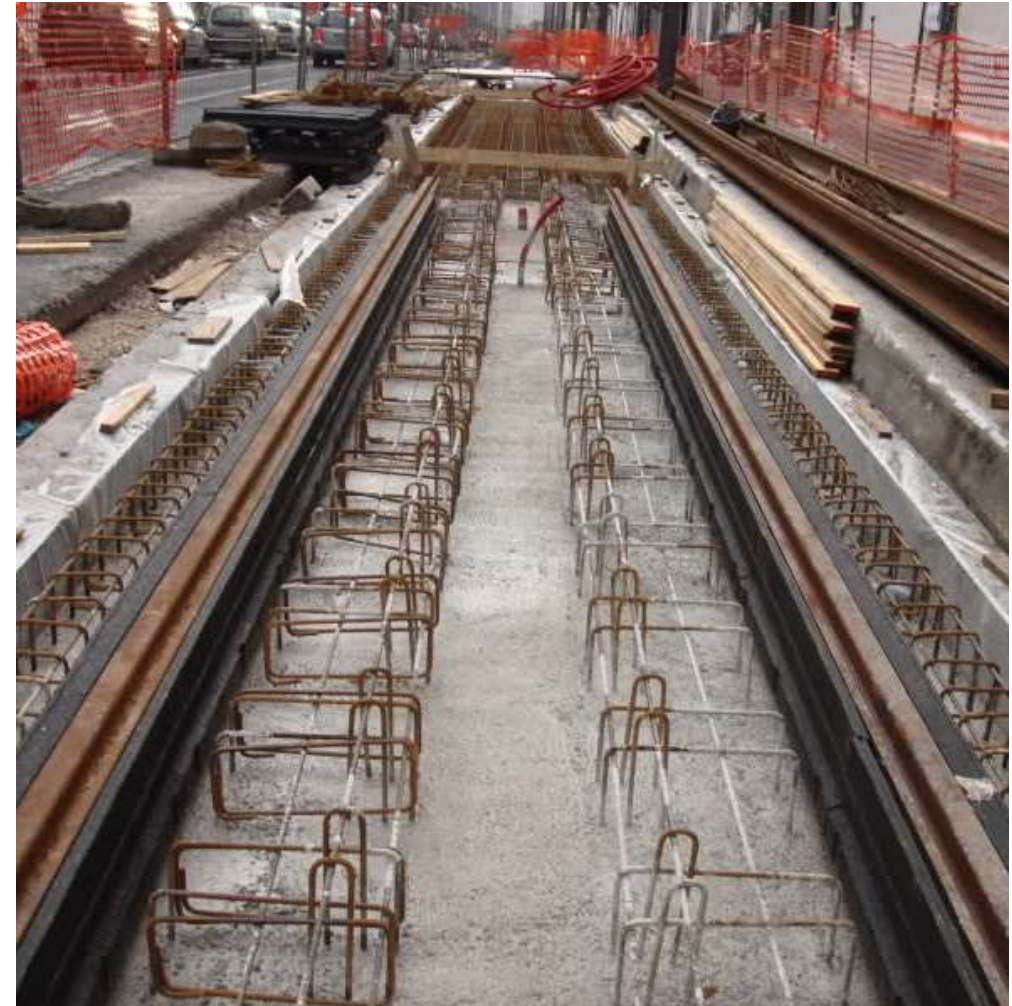


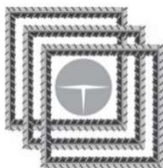
Products: Segments for TBM Machine





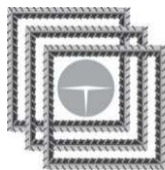
Products: Floating Slab System



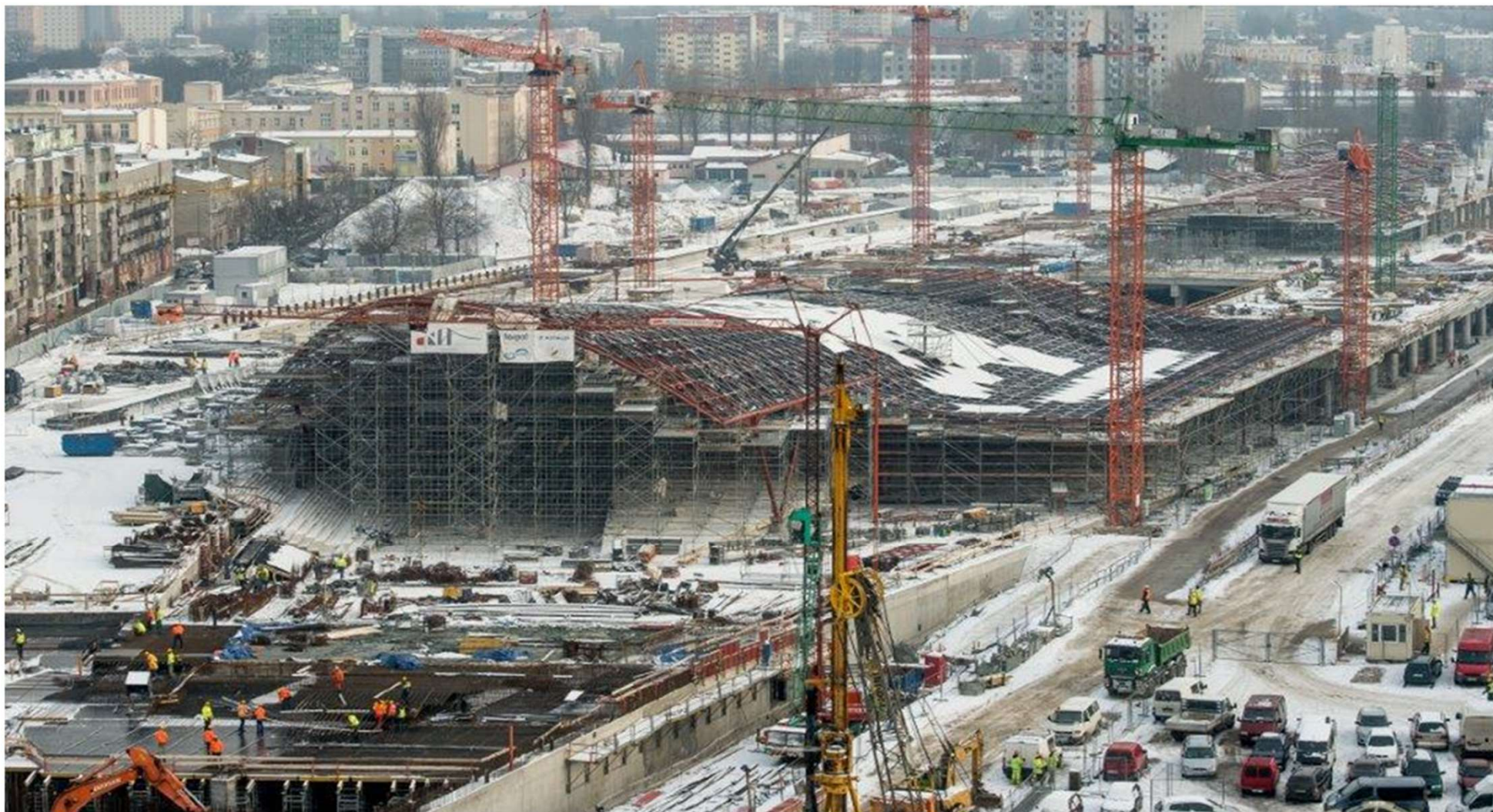


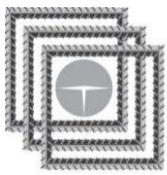
Products: Threading Bars and Couplers LENTON System





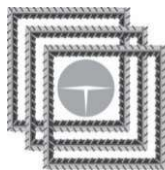
Business line developing plan – Poland Łódź Central Station





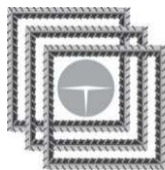
Business line developing plan – Göteborg Central Station





Business line developing plan – Riga Central Station Rail Baltica





Business line developing plan – Køge Hospital





TRASTEEL ENGINEERING POLSKA Sp. z o.o
Ewolucja Stali w Polsce



Head Office Poland: ul. Widok 8 00 - 023 Warszawa
Production Site: Ul. Kupiecka 10, 03-046 Warszawa
Nip. 1070020149 KRS 0000394234
biuro@trasteel.pl

ISO 9001

BUREAU VERITAS
Certification



BRONZE | Top 35%

ecovadis

Sustainability Rating
JUN 2024