

Dear Sirs,

Trasteel Engineering Polska Sp. z o.o. is one of the leading suppliers of steel reinforcement and its all kinds of prefabrication on Polish market. We are covered by **ISO 9001: 2015** quality standard. Top-class machinery in two production manufactures, together with a fully automated production process based on a computerized system in the CE standard, preparation of production ensures a real capacity of 36,000 tons / year of cut and bent, assembly of steel structures at the level of 15,000 tons / year and timely implementation.

For last 10 years on Polish and European market, we're building relations with General Contractors like:

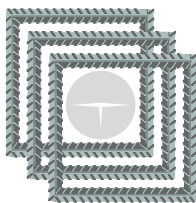
**Astaldi S.p.A, Acciona Ghella JV, Condotte d'Acqua S.p.A., Gülermak, NRC Group ASA, SKANSKA S.A., Rizzani De Eccher, Mar-Bud Sp. z o.o. Budownictwo Sp.k., ITINERA S.p.A., AGP Metro Polska S.C., AGN Haga AB, Impresa Pizzarotti & C.S.p.A., TOTO Costruzioni Generali, Trakcja PRkil S.A., SBJV JV etc.,**

as well as with many Subcontracts like **Keller, Intop Warszawa, PRI Wysowa, Franki Polska, Soletanche, Banimex, etc.**

Our portfolio includes supplies for many interesting investments like roads, railroads, engineering construction, tunnelling etc. as some of them listed below:

- **II Subway Line in Warsaw, Poland**
- **Modernization of railway no 7 (LK 7) Warsaw - Otwock - Dęblin - Lublin, Poland**
- **Railway Line E59 (LK 59) Wrocław - Poznań, Rawicz, Poland**
- **Railway Line E20 (LK E20), CLS Łowicz, Poland**
- **Highway Follobanen, Oslo, Norway**
- **Follo Line Project EPC, Oslo, Norway**
- **THE EPC TBM Follobanen, Norway**
- **S2 Warsaw, Poland**
- **S7 Kraków- Rabka Zdrój, Poland**
- **S5 Poznań- Wrocław, Poland**
- **OOU - Odense University Hospital, Denmark**
- **AGN Haga, Göteborg, Sweden**
- **A673 - The Oaks Prague, Czech Republic**
- **Construction of the new Storstrøm Bridge, Vordingborg, Denmark**
- **Køge Hospital Project, Denmark**
- **Y Towers, Amsterdam, Holland**
- **Skurusund Bridge Project, Stockholm, Sweden**
- **Świna Tunel, Świnoujście, Poland**
- **Streamlining of the Łódź Railway Junction (TEN-T), Łódź, Polska**

And many other...



A few main attributes of our company are:

- ⇒ The raw material used in production are sourced from main steel manufacturers in Europe and in Poland incl. **ArcelorMittal, Celsa Group, Pittini Ferriere Nord** as well as **Baustahlgewebe**;
- ⇒ Production line equipment is standardized and based on brands like **MEP, OSCAM, TECNOMATIC, LENTON**;
- ⇒ **Distribution center and productions** are located in the very center of Poland, in Warsaw and in Łódź;
- ⇒ Present **production capacity is 3 000 tons per month**;

Qualified engineering staff.

Summarising those are main features of Trasteel Engineering Polska with which we offer you best quality products which meets all quality standards and holds all required permits, certificates and technical approvals.

**We offer:**

- Cut and bent of steel ribbed bars in full range of diameters
- Reinforcement cages for slurry walls (D-walls)
- Reinforcement cages for piles
- Reinforcing steel mesh
- Reinforcement of tubings and other elements of tunnels
- Treaded bars and couplers Lenton System®

**As well as many other constructions on special customer's request.**

In consideration of reliable and trustworthy image, we take a great attention to each contract, its production and its logistic.

The client is the most important for us, that's why we are constantly improving our organization.

We are looking forward to doing business with you.

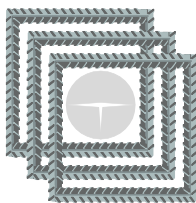
**The Management Trasteel Engineering Polska Sp. z o.o.**

**Issuing your Request For Quotations, please use:**

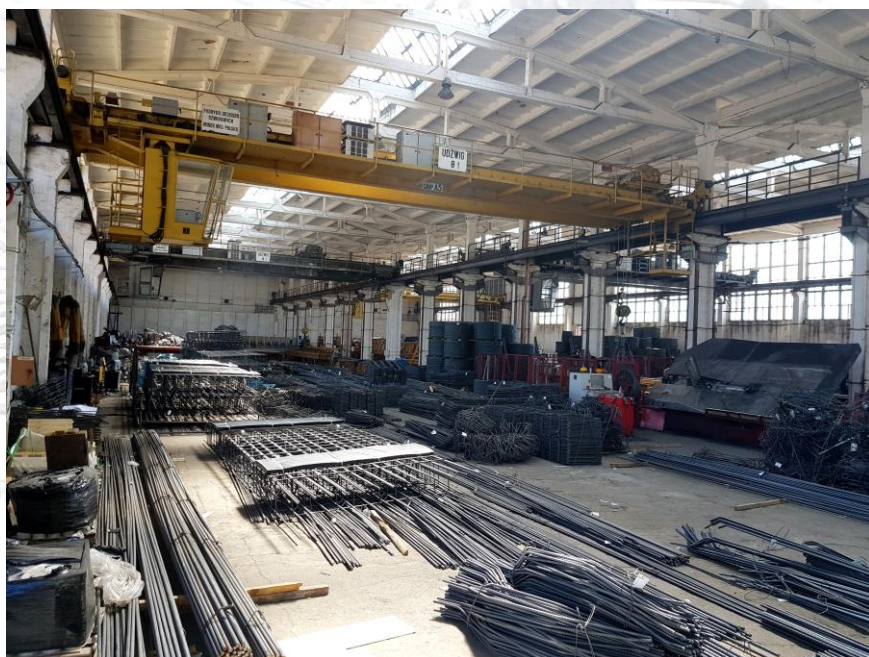
[a.sernesi@trasteel.pl](mailto:a.sernesi@trasteel.pl)

[s.niescior@trasteel.pl](mailto:s.niescior@trasteel.pl)

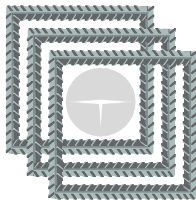




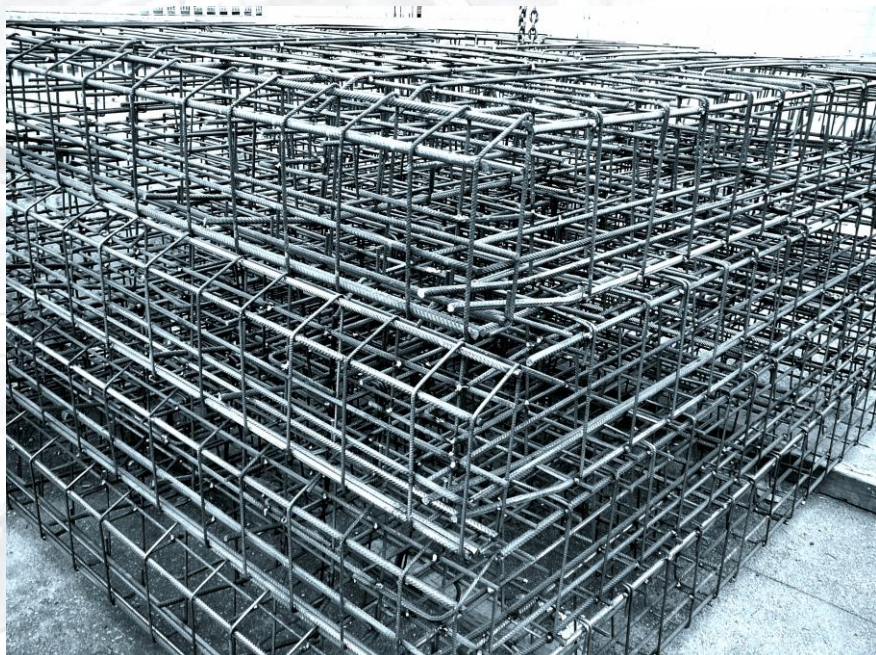
**TRASTEEL ENGINEERING POLSKA Sp. z o.o**  
Ewolucja Stali w Polsce



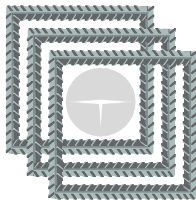




**TRASTEEL ENGINEERING POLSKA Sp. z o.o.**  
Ewolucja Stali w Polsce







**TRASTEEL ENGINEERING POLSKA Sp. z o.o.**  
Ewolucja Stali w Polsce

